

# OFFICE OF DEVELOPMENT AND ALUMNI RELATIONS OVERVIEW

*Admin Forum  
November 8, 2023*



**HARVARD**  
**T.H. CHAN**

**SCHOOL OF PUBLIC HEALTH**

OFFICE OF DEVELOPMENT AND ALUMNI RELATIONS  
(ODAR)

# FUNCTIONAL ORGANIZATION CHART

- Leadership, Major and Principal Giving
- Annual Campaigns
- Research and Prospect Management

**Kimberlee Labonte**  
Managing Director of Development



**Lindsay McConchie**  
Managing Director of Engagement



- Donor Relations
- Development Communications
- Alumni Relations
- Volunteer Leadership
- Events

**Ellie Starr**  
Interim Vice Dean



**Ethlyn O'Garro**  
Managing Director of Strategy & Operations



- Planning – current year and multi-year
- Resource assessment – staffing, infrastructure
- Human Resources
- Reporting and Analysis
- Finance oversight and compliance
- IT & Technology

# CURRENT CONTEXT

## ODAR TEAM

- Organizational Restructure
- 30% new staff

## SCHOOL/UNV

- New University President
- Interim Dean
- Interim Vice Dean

## EXTERNAL

- More in-person activity
- Changed engagement landscape post pandemic
- New appreciation for public health

## ODAR VISION

To create and grow the community and resources to enable health, dignity, and justice for every human being.

# ODAR OBJECTIVES



## PHILANTHROPY

Maximize philanthropic revenue to drive year over year sustainable growth



## ENGAGEMENT

Engage and foster lifelong relationships with alumni and other constituents



## RESOURCES

Serve as effective and efficient stewards of our human and financial resources



## CULTURE

Enhance the ODAR team's professional development and culture of diversity, inclusion, belonging, and excellence



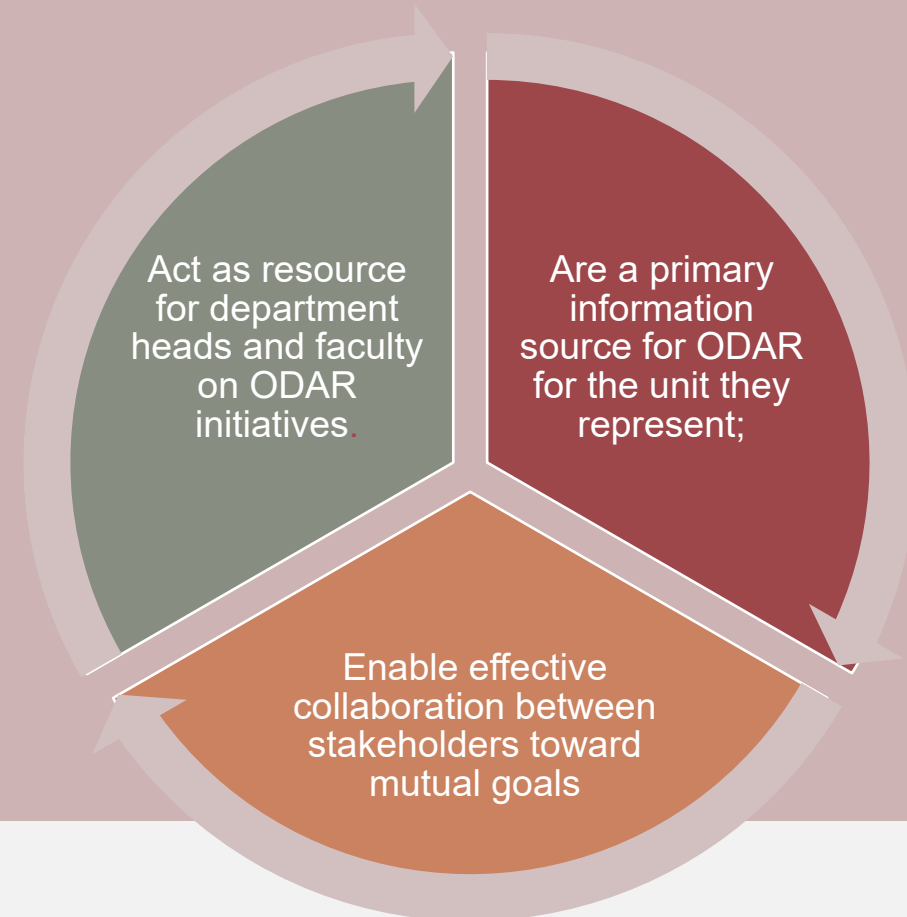
## COMMUNICATION

Serve as a trusted and credible source of communications that informs and responds to our stakeholders

# DEPARTMENT LIAISON MODEL

We employ a department liaison model in which frontline fundraisers work closely with Department Chairs, faculty and academic and administrative leaders to further department, center and initiative fundraising strategies in alignment and in conjunction with broad School fundraising priorities.

Liaisons:



# IMPACT OF PHILANTHROPY, AND HOW WE GET THERE

Broaden our donor base



Engage our constituents



Leverage our volunteers



Explain and encourage annual giving



Education about giving, and the endowment





# HARVARD CHAN SCHOOL ALUMNI RELATIONS

David Rogers  
Director of Alumni  
Relations

Amelia Clouse  
Assistant Director  
of Alumni Relations

Marielle  
Boudreau  
Alumni Data and  
Administrative  
Coordinator

*The Office for Alumni Relations provides social, educational, volunteer, and networking opportunities that forge meaningful connections between alumni and the Harvard Chan community.*

# WHO MAKES UP THE ALUMNI ASSOCIATION?

- All alumni of Harvard Chan are automatically members of the Association
- 15,000 alumni with emails + 3,200 alumni without email addresses (1328 for which there is no contact info)
- Degree holders
- Postdocs who have completed one year of residency
- 500+ graduates are added to the Association each May

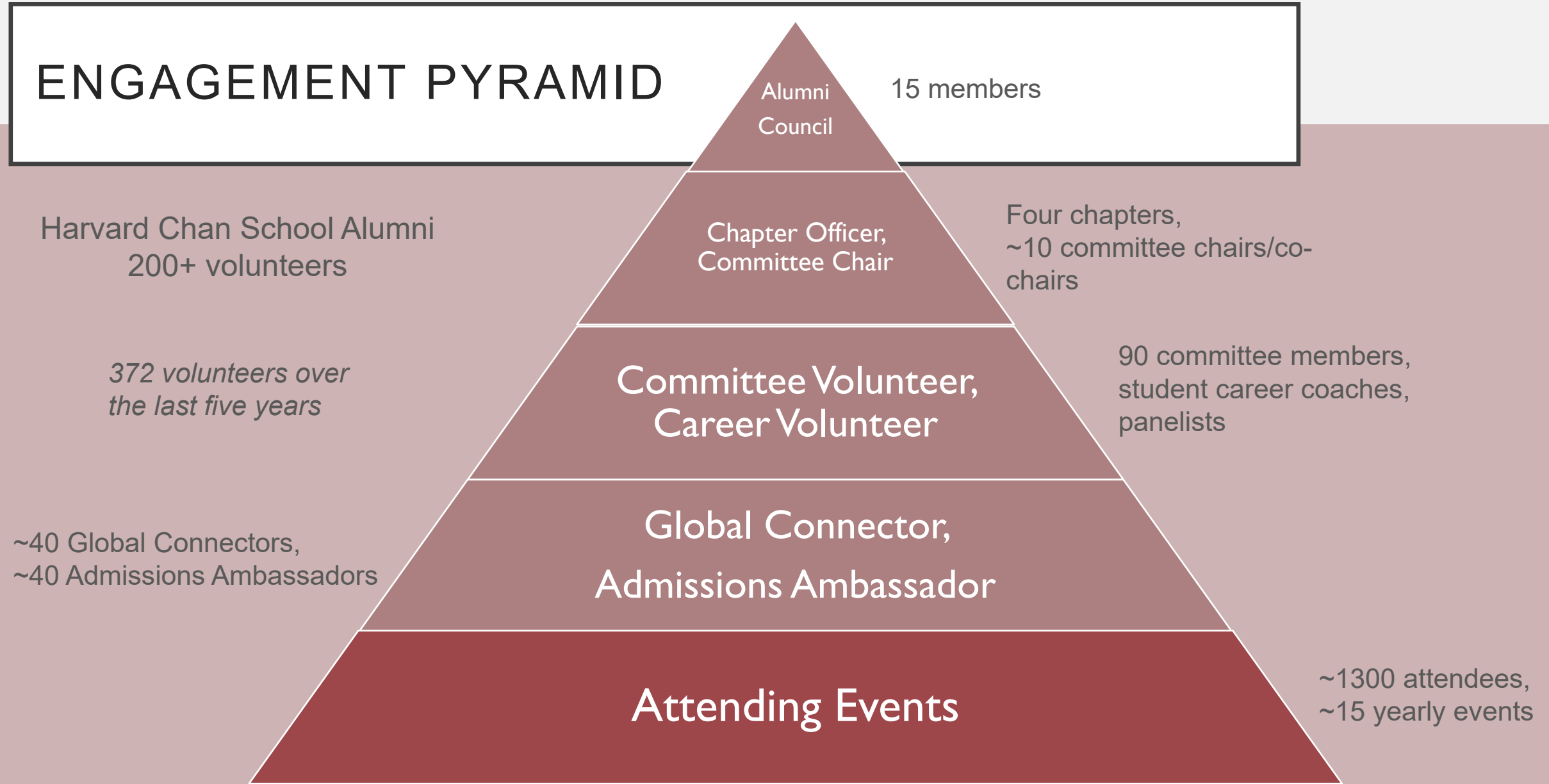
# WHERE DO ALUMNI LIVE?

- **Boston (5,158)**
- **United States**
  - **New York City area**
  - **Washington, DC area**
  - **San Francisco**
  - **Los Angeles**
  - **Seattle**
- **Canada (708) – Toronto**
- **Outside US and Canada (Taiwan, Japan, China, England, India)**

# THE ALUMNI COUNCIL

- **The Alumni Council is the elected body of the Alumni Association**
- ☐ **13 elected officers plus two ex officio officers**
  - **President-elect – elected every two years**
  - **President**
  - **Immediate past-president**
  - **Vice President – elected every two years**
  - **Six Councilors – two councilors elected every two years. Serve a three-year term.**
  - **Class presidents of the last three classes. Serve a three-year term.**
  - **Two Graduate School Directors. Ex officio. Serve a three-year term.**
- ☐ **Meets quarterly**

# ENGAGEMENT PYRAMID



• VOLUNTEER DEMOGRAPHICS



- 218 volunteers
- 22 of countries
- 15 Council officers
- 17 Chapter officers (four chapters)
- 40 Global Connectors
- 40 Admissions Ambassadors

# INITIATIVES & PROGRAMS YOU MIGHT HEAR ABOUT

Alumni Weekend – End of September

Alumni Awards – At Alumni Weekend

Alumni Career Fellowship - Annually

Alumni Panels/Workshops for students

APHA/JPM receptions

Giving Day

Global Night of Networking Pre-Receptions - March

Council elections

Student elections

Spring Leadership Retreat

Webinars

Alumni Day - June

Department Receptions at conferences – All year

Affinity Group Programming



# HOW WE INTERACT WITH SCHOOL OFFICES

- **Anthology – Alumni Database, Email, and Events**
  - Departments can use Anthology to communicate with their alumni
- **Co-host/co-sponsorships – webinars, receptions at conferences**
- **Alumni status, degree confirmation, diploma questions - go through Registrar's Office**



# BENEFITS OF OUR PARTNERSHIP

The more we know about each other, the better we can help each other

We can...

- ✓ Highlight faculty and their work to new and potential donors (tell us your travel plans!)
- ✓ Advocate for faculty research
- ✓ Introduce faculty to new collaborators across University
- ✓ Deliver on Dean Kim's priorities around community by working together
- ✓ Raise flexible and gap funds for faculty and department work
- ✓ Tell the story of the School and make meaningful connections with its closest constituents

THANK YOU!

WE ARE GRATEFUL FOR YOUR  
PARTNERSHIP AND SUPPORT

# APPENDICES

# WHY GIVE? VIDEO

Does Harvard Chan School *really* need donor support?



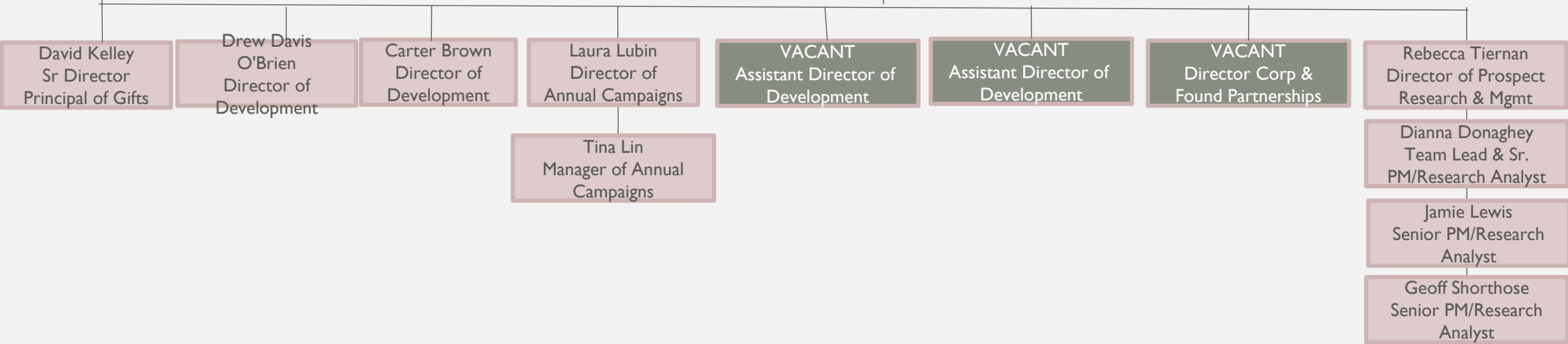
**HARVARD**  
**T.H. CHAN**  
SCHOOL OF PUBLIC HEALTH



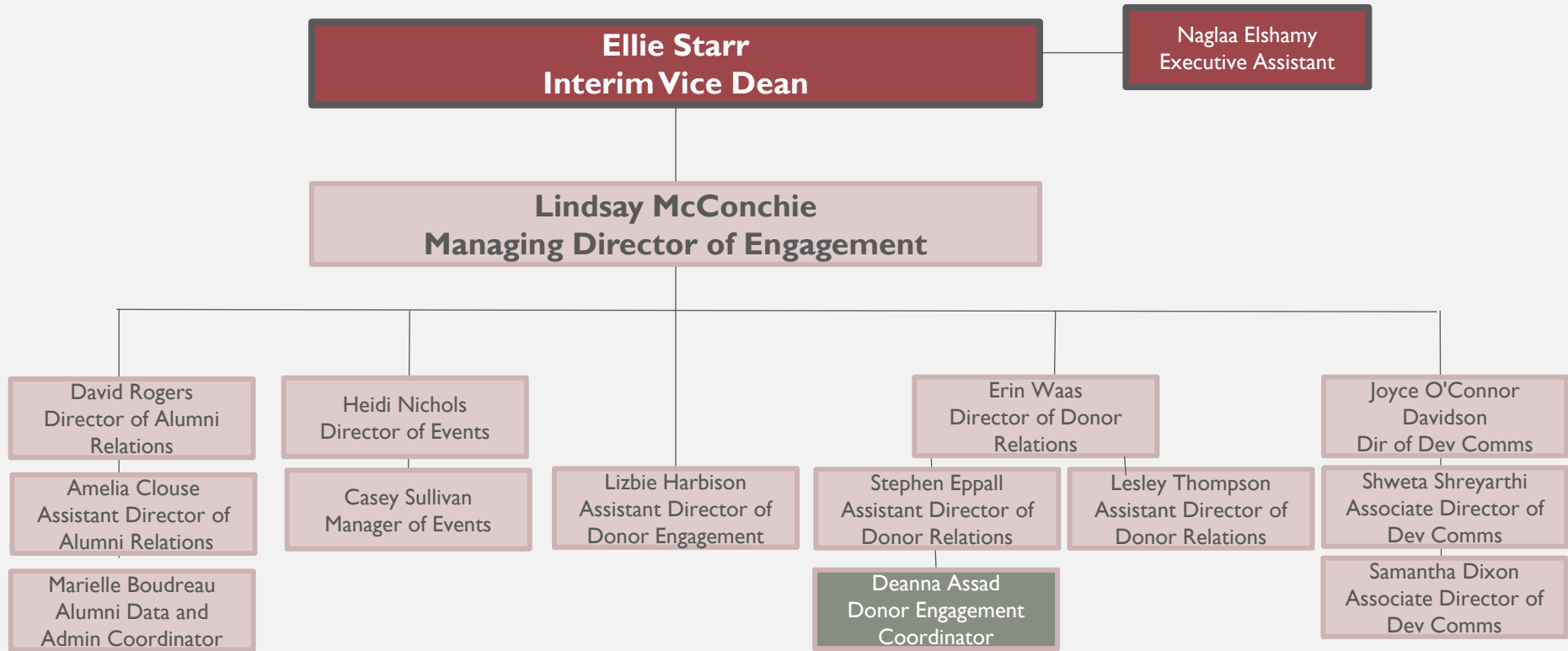
**Ellie Starr**  
Interim Vice Dean

Naglaa Elshamy  
Executive Assistant

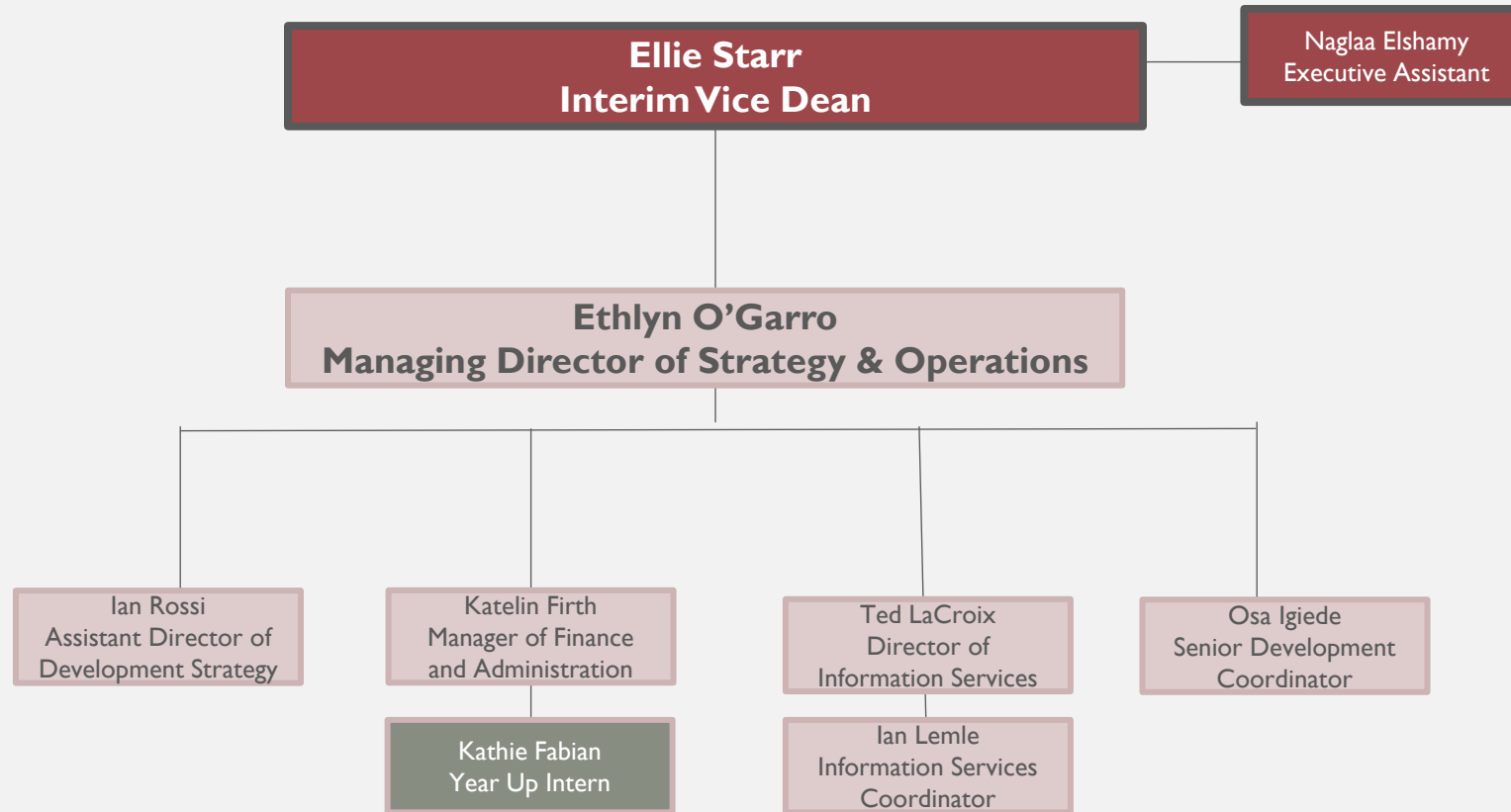
**Kimberlee Labonte**  
Managing Director of Development



**13 Total FTE**  
**2 Immediate Vacancies**



**14 Total FTE**  
**0 Immediate Vacancies**



**7 Total FTE**  
**0 Immediate Vacancies**

# DEPARTMENT LIAISON ASSIGNMENTS

## Carter Brown

- Global Health and Population
- Center for Health Communication
- Harvard Humanitarian Initiative
- Immunology and Infectious Diseases

## David Kelley

- Biostatistics, Epidemiology
- Center for Communicable Disease Dynamics
- LKK Center for Health and Happiness
- Zhu Center
- India Research Center
- Harvard Global Health Institute

## Kim Labonte

- Environmental Health
- C-CHANGE
- John B. Little Center for Radiation Sciences
- Harvard Global Nursing Leadership Program
- François-Xavier Bagnoud Center for Health and Human Rights

## Dir of Development

- Molecular Metabolism
- Social and Behavioral Sciences
- Harvard Chan School AIDS Initiative
- STRIPED
- 1913 Society/Planned Giving

## Drew Davis O'Brien

- Health Policy and Management
- Center for Health Decision Science
- Harvard Injury Control Research Center
- Harvard Chan School Center for Work, Health, and Well-being
- Ariadne
- Harvard Center for Population and Development Studies

## Ellie Starr

- Initiative on Health and Homelessness
- Immunology and Infectious Diseases
- TNH Center for Mindfulness in Public Health
- Nutrition